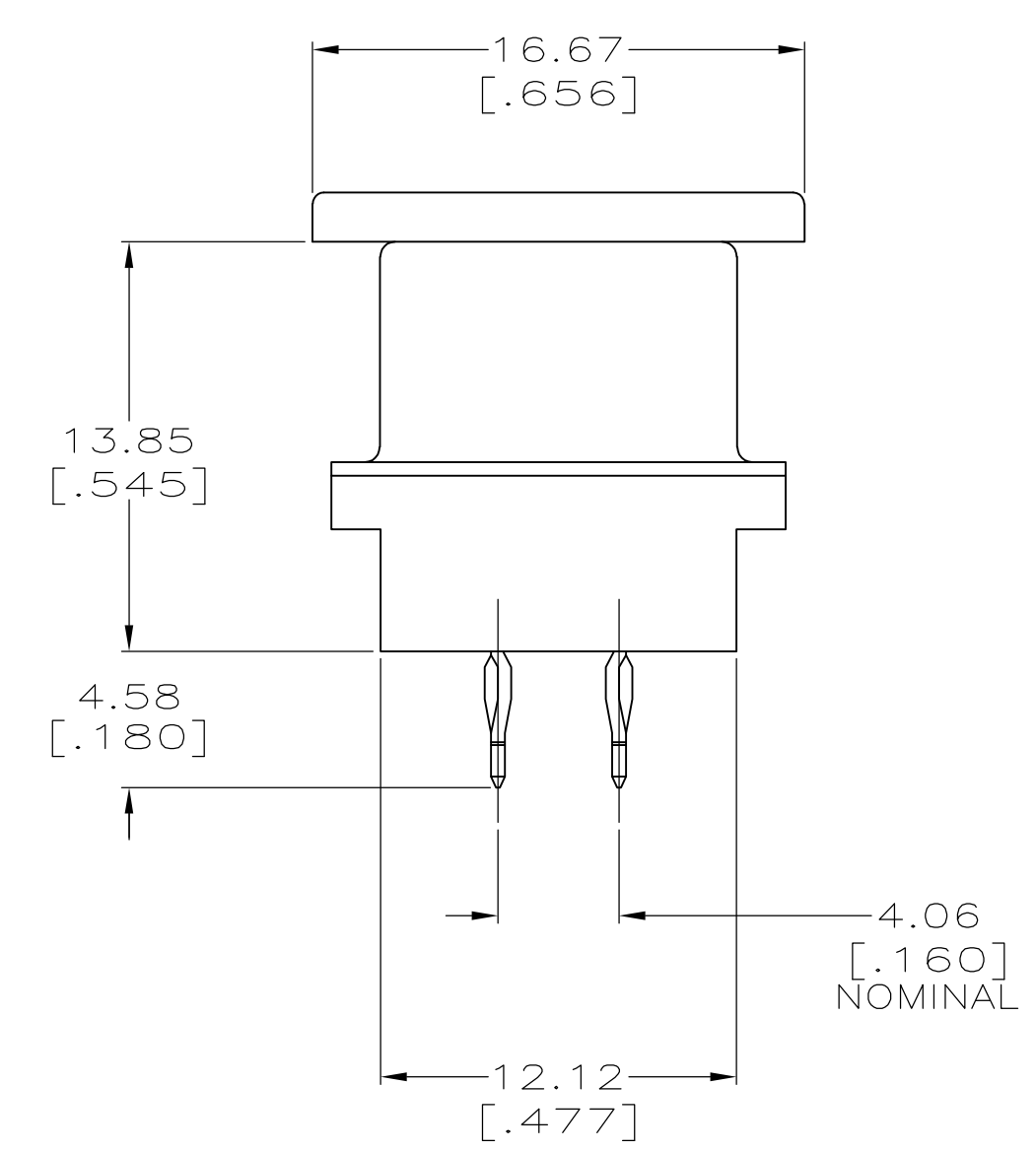
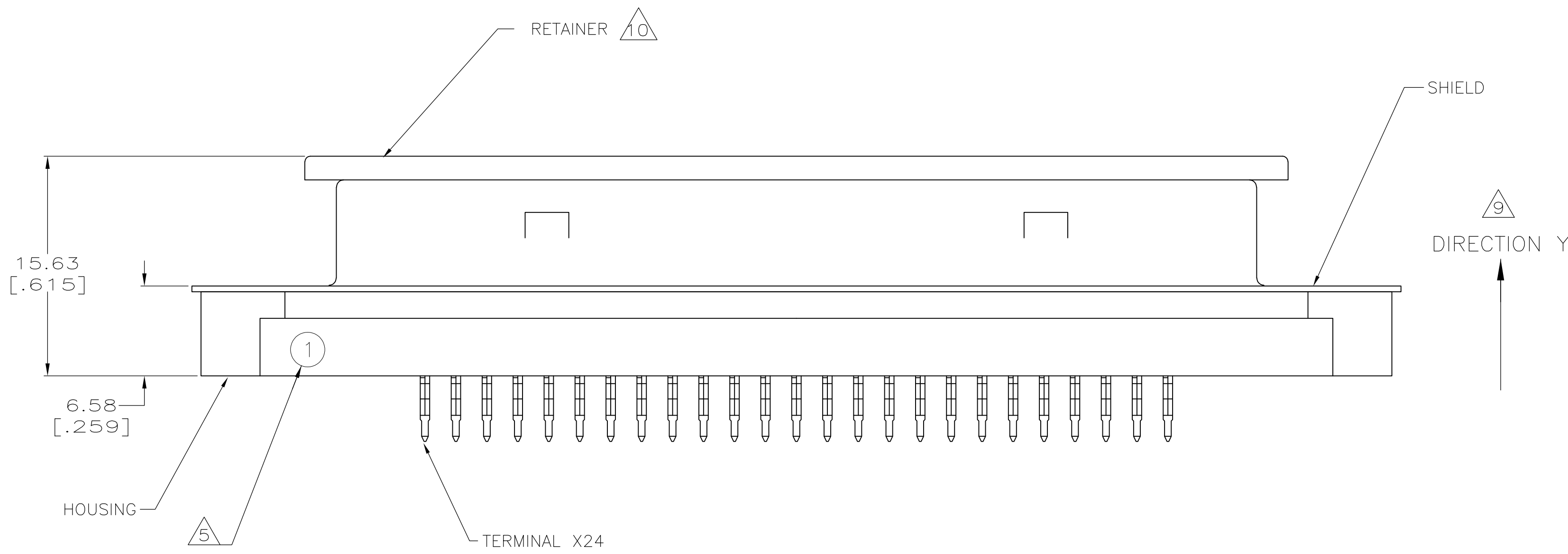
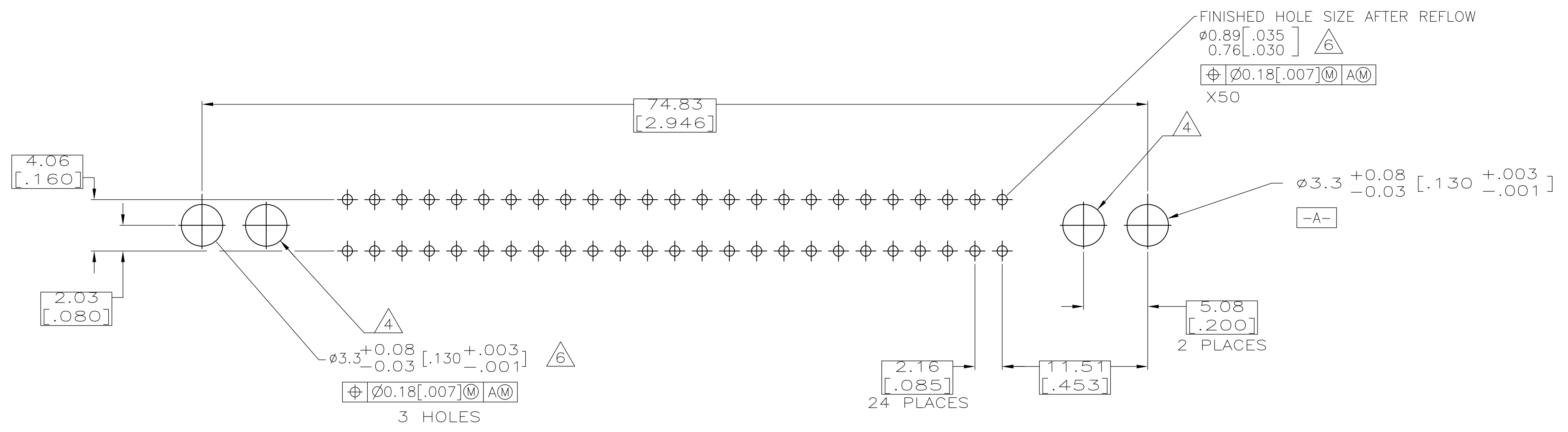
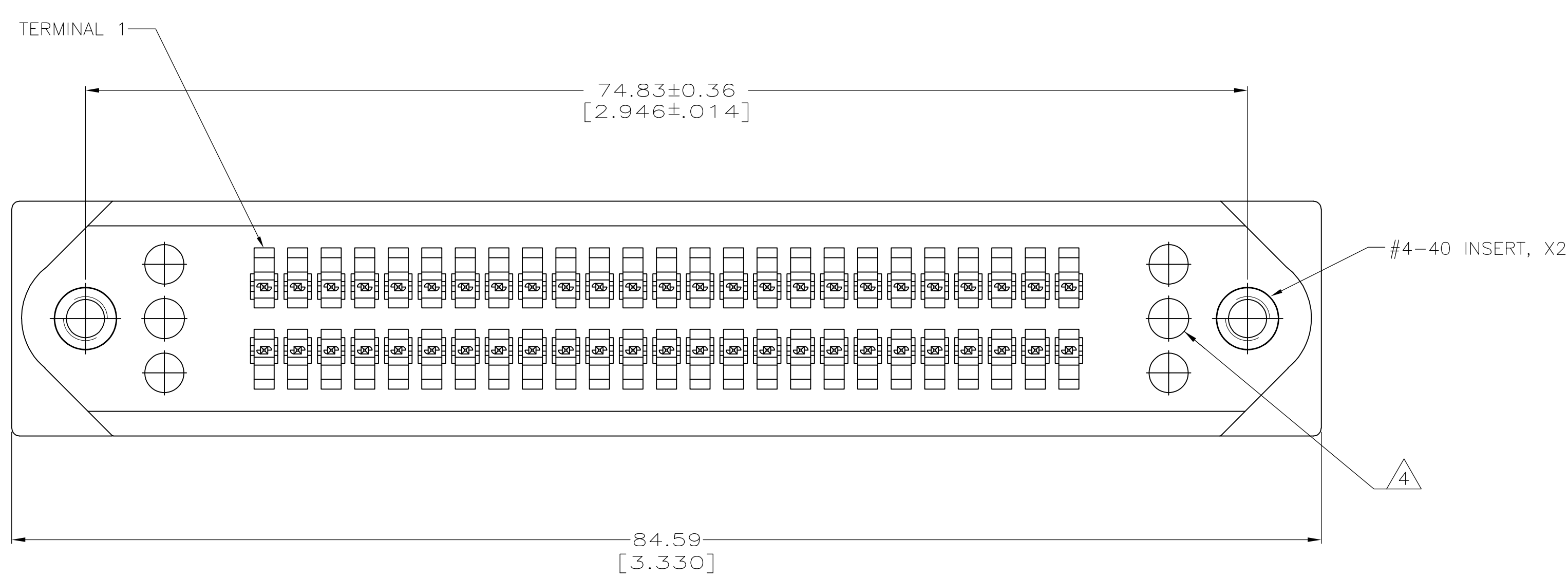


LOC		DIST		REVISIONS			
GP	00	REV	DATE	BY	APP'D	DATE	BY
A		RELEASED PER ECO-08-005121	29FEB2008	ZMR	WLM		



- 1. DIMENSIONS ARE MAXIMUM UNLESS OTHERWISE SPECIFIED.
- 2. MATERIAL: HOUSING - POLYESTER, BLACK.
 TERMINALS - COPPER ALLOY PLATED WITH 0.76µm [.000030] MINIMUM GOLD ON MATING SURFACE AND 2.54µm [.000100] MINIMUM TIN-LEAD ON ACTION PIN AREA OVER 1.27µm [.000050] MINIMUM NICKEL UNDERPLATE OVER ENTIRE TERMINAL.
 RETAINER - POLYETHYLENE, NATURAL.
 SHIELD - CARBON STEEL, PLATED BRIGHT NICKEL 5.08µm [.000200] MINIMUM.
 INSERTS - ZINC PLATED BRASS.
- 3. THE CONTACT SURFACES OF THE TERMINALS ARE COATED WITH LUBRICANT.
- 4. OPTIONAL MOUNTING HOLE FOR SELF-TAPPING SCREW.
- 5. "1" ON HOUSING INDICATES LOCATION OF TERMINAL 1.
- 6. ALL PLATED-THRU HOLES SHALL BE PER AMP SPEC 115-6072.
- 7. 50 LBS MINIMUM FORCE REQUIRED TO UNSEAT CONNECTOR FROM PRINTED CIRCUIT BOARD WITHOUT USE OF HARDWARE.
- 8. CENTER-TO-CENTER SPACING OF TERMINALS IS 2.16 [.085] NOMINAL.
- 9. INSERTS SHALL WITHSTAND A 222 N [50 LB] PULL FORCE IN DIRECTION Y.
- 10. RETAINER MUST REMAIN INSTALLED UNTIL AFTER CONNECTOR HAS BEEN INSERTED INTO PCB HOLES.



PRINTED CIRCUIT BOARD MOUNTING DIMENSIONS

2007381-1
PART NUMBER

THIS DRAWING IS A CONTROLLED DOCUMENT.		DIN: Z.M.REAM 29FEB2008	Tyco Electronics Corporation Harrisburg, Pa 17105-3608	
DIMENSIONS: mm		CHK: W.L.MILLHIMES 29FEB2008	NAME: R.H.WERTZ 29FEB2008	
TOLERANCES UNLESS OTHERWISE SPECIFIED:		PRODUCT SPEC		
0. PLC	±	APPLICATION SPEC		
1. PLC	±	SIZE: A1		
2. PLC	±	CAGE CODE: 00779		
3. PLC	±	DRAWING NO: 2007381		
4. PLC	±	RESTRICTED TO: -		
ANGLES	±	WEIGHT: -		
MATERIAL: 2		FINISH: 2		CUSTOMER DRAWING
		SCALE: 4:1	SHEET: 1 of 1	REV: A