

SECTION A-A  
(WITHOUT CAP)

SECTION A-A  
(WITH CAP)

NOTES:

- MATERIAL:  
HOUSING: NYLON, GLASS FILLED, UL94 V-0,  
COLOR - SEE TABLE.  
CAP: NYLON, GLASS FILLED, UL94V-0  
COLOR: BEIGE.  
PINS: BRASS ALLOY, C26000, P/N87437-8083.
- PLATING: 2.54µM. MIN. TIN OVER 1.27µM MIN. NICKEL.
- DRAWING SHOWS PLUG WITH 5 CIRCUITS.
- HEADER TO BE USED WITH CRIMP HOUSING, P/N 87439  
AND CRIMP TERMINAL, P/N 87421.
- PARTS TO BE PACKED IN MOISTURE BAG.

|   |            |                                |                    |
|---|------------|--------------------------------|--------------------|
| ADD MOIST BAG NOTE<br>EC NO: S2007-1049<br>DRWNS:KANG<br>CHKD:ATSEE<br>APPR:MLONG | 2007/06/22 | QUALITY SYMBOLS<br>▽=0<br>▽C=0 | DESCRIPTION<br>REV |
|   | 2007/06/22 |                                |                    |
|   | 2007/06/22 |                                |                    |
|   | 2007/06/22 |                                |                    |
| D7  |            |                                |                    |

| GENERAL TOLERANCES (UNLESS SPECIFIED)                   |       |
|---|-------|
| mm  | INCH  |
| 4 PLACES ± ---  | ± --- |
| 3 PLACES ± ---  | ± --- |
| 2 PLACES ± 0.20   | ± --- |
| 1 PLACE ± ---   | ± --- |
| ANGULAR ± 3°  |       |
| DRAFT WHERE APPLICABLE<br>MUST REMAIN WITHIN DIMENSIONS |       |

| DIMENSION STYLE<br>MM ONLY |            |
|----------------------------|------------|
| DRAWN BY                   | DATE       |
| 1994/04/08                 |            |
| CHECKED BY                 | DATE       |
| SKTOH                      | 1994/04/21 |
| APPROVED BY                | DATE       |
| RWONG                      | 1994/04/21 |
| MATERIAL NO.               |            |
| SEE TABLE                  |            |
| SIZE                       |            |
| A3                         |            |

|   |                        |                        |
|---|------------------------|------------------------|
| SCALE<br>NTS  | DESIGN UNITS<br>METRIC | THIRD ANGLE PROJECTION |
| TITLE<br>1.50MM PITCH, W-T-B<br>HEADER, VERTICAL, SMT |                        |                        |
| MOLEX INCORPORATED                                    |                        | SHEET NO.<br>1 OF 4    |
| DOCUMENT NO.<br>SD-87437-***31                        |                        |                        |

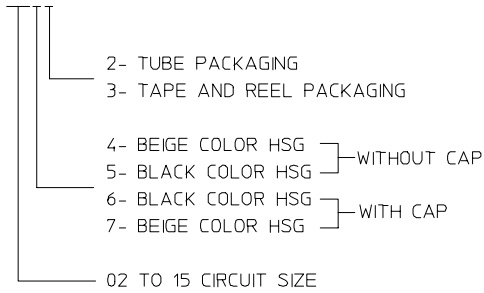
10 9 8 7 6 5 4 3 2 1



| CIRCUIT SIZE | A     | B     | C     | D     | E     |
|--------------|-------|-------|-------|-------|-------|
| 02           | 1.50  | 3.30  | 3.70  | 4.30  | 1.70  |
| 03           | 3.00  | 4.80  | 5.20  | 5.80  | 3.20  |
| 04           | 4.50  | 6.30  | 6.70  | 7.30  | 4.70  |
| 05           | 6.00  | 7.80  | 8.20  | 8.80  | 6.20  |
| 06           | 7.50  | 9.30  | 9.70  | 10.30 | 7.70  |
| 07           | 9.00  | 10.80 | 11.20 | 11.80 | 9.20  |
| 08           | 10.50 | 12.30 | 12.70 | 13.30 | 10.70 |
| 09           | 12.00 | 13.80 | 14.20 | 14.80 | 12.20 |
| 10           | 13.50 | 15.30 | 15.70 | 16.30 | 13.70 |
| 11           | 15.00 | 16.80 | 17.20 | 17.80 | 15.20 |
| 12           | 16.50 | 18.30 | 18.70 | 19.30 | 16.70 |
| 13           | 18.00 | 19.80 | 20.20 | 20.80 | 18.20 |
| 14           | 19.50 | 21.30 | 21.70 | 22.30 | 19.70 |
| 15           | 21.00 | 22.80 | 23.20 | 23.80 | 21.20 |

PART NUMBER ASSIGNMENT

87437-XXXX



F

E

D

C

B

A

F

E

D

C

B

A

|   |  |                               |  |                      |                               |  |   |                        |                        |  |                     |
|---|--|-------------------------------|--|----------------------|-------------------------------|--|---|------------------------|------------------------|--|---------------------|
| ADD MOIST BAG NOTE<br>EC NO: S2007-1049<br>DRWN:SKANG<br>CHKD:ATSEE<br>APPR:MLONG | 2007/06/22<br>2007/06/22<br>2007/06/22 | QUALITY SYMBOLS<br>▽=0<br>▽=0 | GENERAL TOLERANCES (UNLESS SPECIFIED)                |                      | DIMENSION STYLE<br>MM ONLY    |  | SCALE<br>NTS  | DESIGN UNITS<br>METRIC | THIRD ANGLE PROJECTION |  |                     |
|   |  |                               | 4 PLACES ± --- ± ---                                 | DRAWN BY<br>KCLING   | DATE<br>1994/04/08            | TITLE<br>1.50MM PITCH, W-T-B HEADER, VERTICAL, SMT |   |                        |                        |  |                     |
|   |  |                               | 3 PLACES ± --- ± ---                                 | CHECKED BY<br>SKTOH  | DATE<br>1994/04/21            |  |   |                        |                        |  |                     |
|   |  |                               | 2 PLACES ± 0.20 ± ---                                | APPROVED BY<br>RWONG | DATE<br>1994/04/21            | MOLEX INCORPORATED                                 |   |                        |                        |  |                     |
|   |  | 1 PLACE ± --- ± ---           | MATERIAL NO.   |                      | DOCUMENT NO.<br>SD-87437-**31 |  |   |                        |                        |  | SHEET NO.<br>2 OF 4 |
| D7  |  | REV                           | DRAFT WHERE APPLICABLE MUST REMAIN WITHIN DIMENSIONS |                      | SEE TABLE                     |  | THIS DRAWING CONTAINS INFORMATION THAT IS PROPRIETARY TO MOLEX INCORPORATED AND SHOULD NOT BE USED WITHOUT WRITTEN PERMISSION |                        |                        |  |                     |

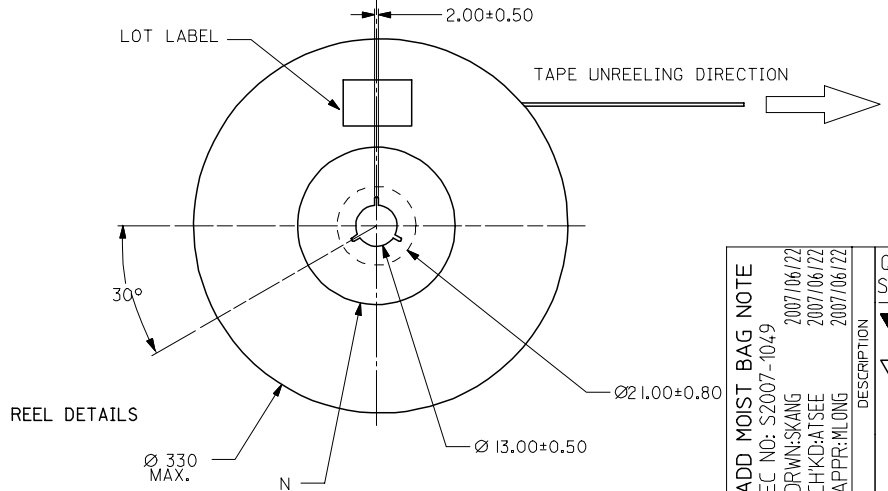
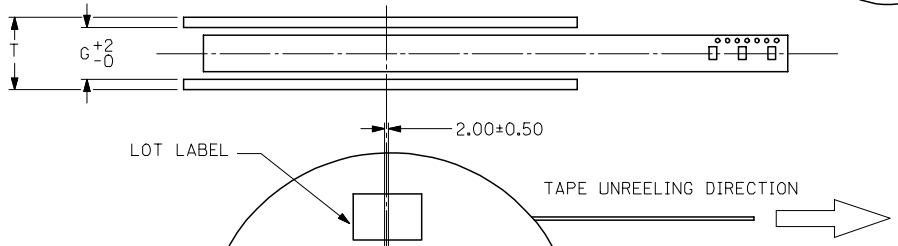
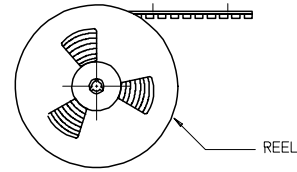
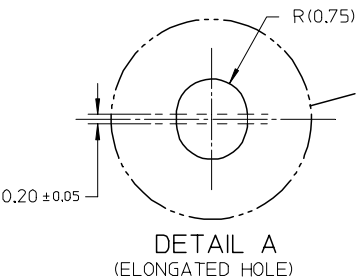
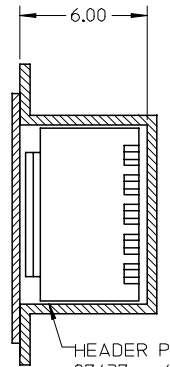
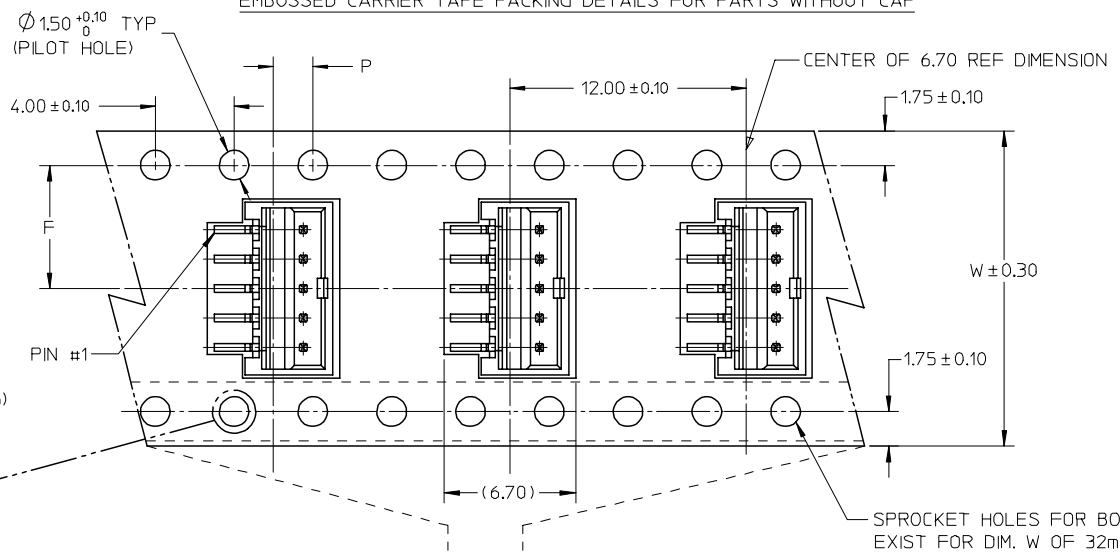
9 8 7 6 5 4 3 2 1

10 9 8 7 6 5 4 3 2 1

EMBOSSED CARRIER TAPE PACKING DETAILS FOR PARTS WITHOUT CAP

F  
E  
D  
C  
B  
A

F  
E  
D  
C  
B  
A



|                    |             |
|--------------------|-------------|
| ADD MOIST BAG NOTE | DESCRIPTION |
| EC NO: S2007-1049  | DRWNS:SKANG |
| 2007/06/22         | CHKD:ATSEE  |
| 2007/06/22         | APPR:MLONG  |
| D7                 | REV         |

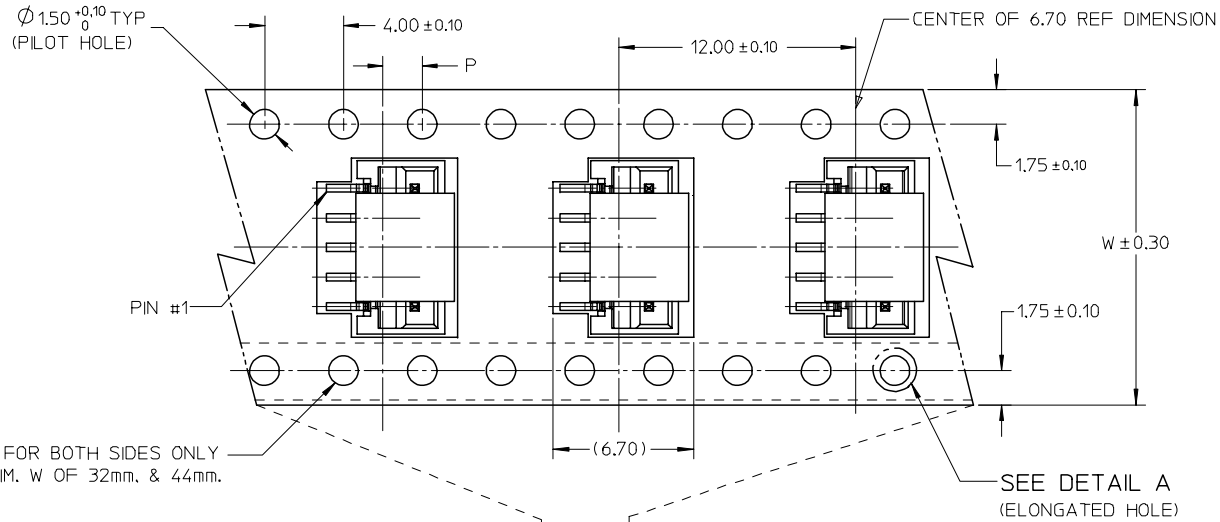
|                 |                     |
|-----------------|---------------------|
| QUALITY SYMBOLS | $\nabla=0$          |
|                 | $\sphericalangle=0$ |

|  |                       |           |
|--|-----------------------|-----------|
| GENERAL TOLERANCES (UNLESS SPECIFIED)                | mm                    | INCH      |
|  | 4 PLACES $\pm$ ---    | $\pm$ --- |
|  | $\pm$ ---             | $\pm$ --- |
|  | 2 PLACES $\pm 0.20$   | $\pm$ --- |
|  | 1 PLACE $\pm$ ---     | $\pm$ --- |
|  | ANGULAR $\pm 3^\circ$ |           |
| DRAFT WHERE APPLICABLE MUST REMAIN WITHIN DIMENSIONS |                       |           |

|                 |   |           |                                      |                        |
|-----------------|---|-----------|--------------------------------------|------------------------|
| DIMENSION STYLE |   | SCALE     | DESIGN UNITS                         | THIRD ANGLE PROJECTION |
| MM ONLY         |   | NTS       | METRIC                               |                        |
| DRAWN BY        | DATE  | TITLE     | MOLEX INCORPORATED<br>SD-87437-**-31 |                        |
| KCLING          | 1994/04/08  |           |                                      |                        |
| CHECKED BY      | DATE  |           |                                      |                        |
| SKTOH           | 1994/04/21  |           |                                      |                        |
| APPROVED BY     | DATE  |           |                                      |                        |
| RWONG           | 1994/04/21  |           |                                      |                        |
| MATERIAL NO.    | DOCUMENT NO.  | SHEET NO. |                                      |                        |
| SEE TABLE       | SD-87437-**-31  | 3 OF 4    |                                      |                        |
| SIZE            | THIS DRAWING CONTAINS INFORMATION THAT IS PROPRIETARY TO MOLEX INCORPORATED AND SHOULD NOT BE USED WITHOUT WRITTEN PERMISSION |           |                                      |                        |
| A3              |   |           |                                      |                        |

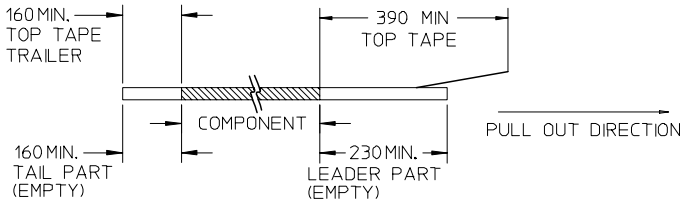
9 8 7 6 5 4 3 2 1

EMBOSSED CARRIER TAPE PACKING DETAILS FOR PARTS WITH CAP

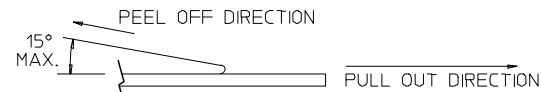


NOTES:

1. LEADER AND TRAILER TAPE



2. PEELING OFF FORCE OF THE TOP TAPE: 20-80gf. (PEELING DIRECTION AS SHOWN IN FOLLOWING FIGURE)



- 3. THE TAPE IS TREATED FOR ANTI-STATIC.
- 4. PACKAGING STANDARD IS AS PER EIA-481.
- 5. TAPE & REEL QUANTITY = 1000PCS/REEL (WITHOUT CAP)  
TAPE & REEL QUANTITY = 900PCS/REEL (WITH CAP)

|                |    |            |     |       |       |           |
|----------------|----|------------|-----|-------|-------|-----------|
| 15             | 44 | 20.20±0.15 | 100 | 44.40 | 50.40 | 2.00±0.15 |
| 11, 12, 13, 14 | 32 | 14.20±0.10 | 100 | 32.40 | 38.40 | 2.00±0.10 |
| 7, 8, 9, 10    | 24 | 11.50±0.10 | 100 | 24.40 | 30.40 | 2.00±0.10 |
| 2, 3, 4, 5, 6  | 16 | 7.50±0.10  | 100 | 16.40 | 22.40 | 2.00±0.10 |
| CIRCUIT SIZE   | W  | F          | N   | G     | T MAX | P         |

|   |  |  |                                       |                           |                            |                                |                    |   |                        |  |  |
|---|--|--|---------------------------------------|---------------------------|----------------------------|--------------------------------|--------------------|---|------------------------|--|--|
| ADD MOIST BAG NOTE<br>EC NO: S2007-1049<br>DRWNS:KANG<br>CHKD:ATSEE<br>APPR:MLONG | 2007/06/22<br>2007/06/22<br>2007/06/22 | QUALITY SYMBOLS<br>▽=0<br>▽=0                              | GENERAL TOLERANCES (UNLESS SPECIFIED) |                           | DIMENSION STYLE<br>MM ONLY |                                | SCALE<br>NTS       | DESIGN UNITS<br>METRIC                                | THIRD ANGLE PROJECTION |  |  |
|   |  |  |                                       |                           | DRAWN BY<br>KCLING         |                                | DATE<br>1994/04/08 | TITLE<br>1.50MM PITCH, W-T-B<br>HEADER, VERTICAL, SMT |                        |  |  |
|   |  |  |                                       |                           | CHECKED BY<br>SKTOH        |                                | DATE<br>1994/04/21 | MOLEX INCORPORATED<br>SD-87437-**-31                  |                        |  |  |
|   |  |  |                                       |                           | APPROVED BY<br>RWONG       |                                | DATE<br>1994/04/21 |   |                        |  |  |
|   |  | DRAFT WHERE APPLICABLE<br>MUST REMAIN<br>WITHIN DIMENSIONS |                                       | MATERIAL NO.<br>SEE TABLE |                            | DOCUMENT NO.<br>SD-87437-**-31 |                    | SHEET NO.<br>4 OF 4                                   |                        |  |  |